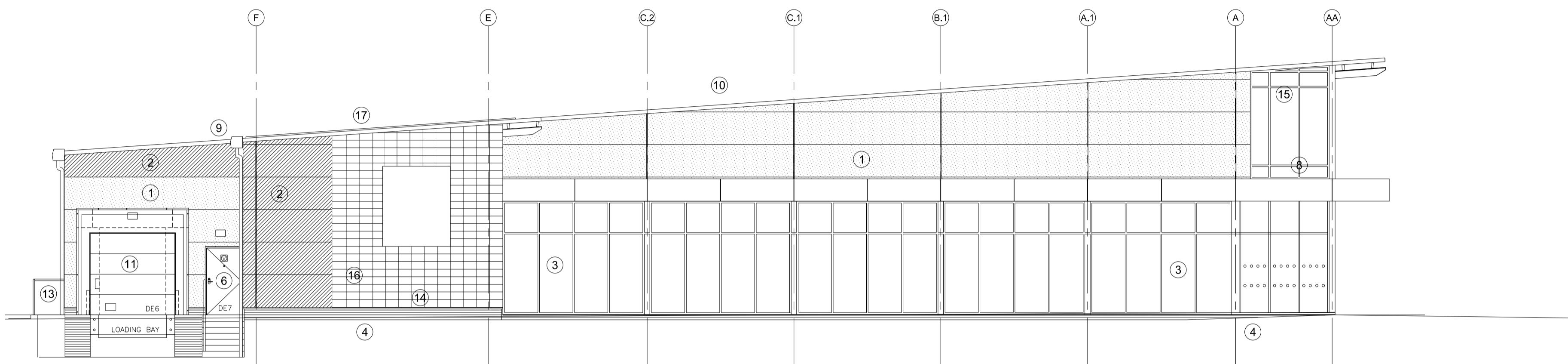
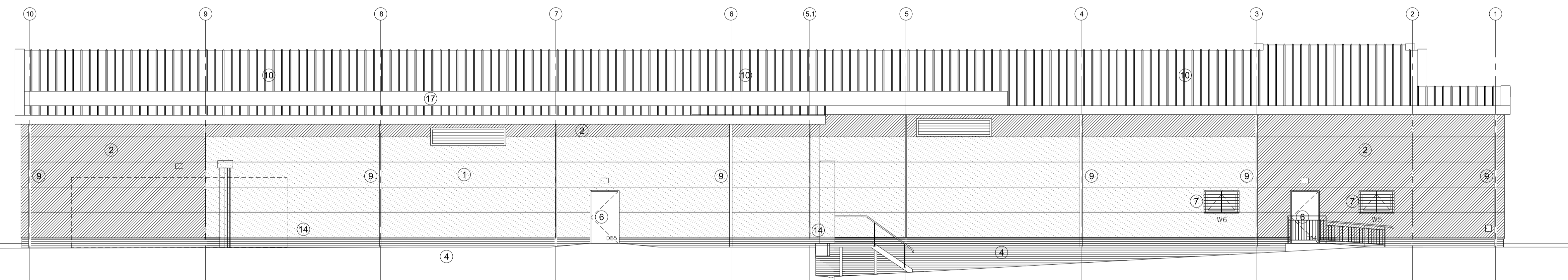


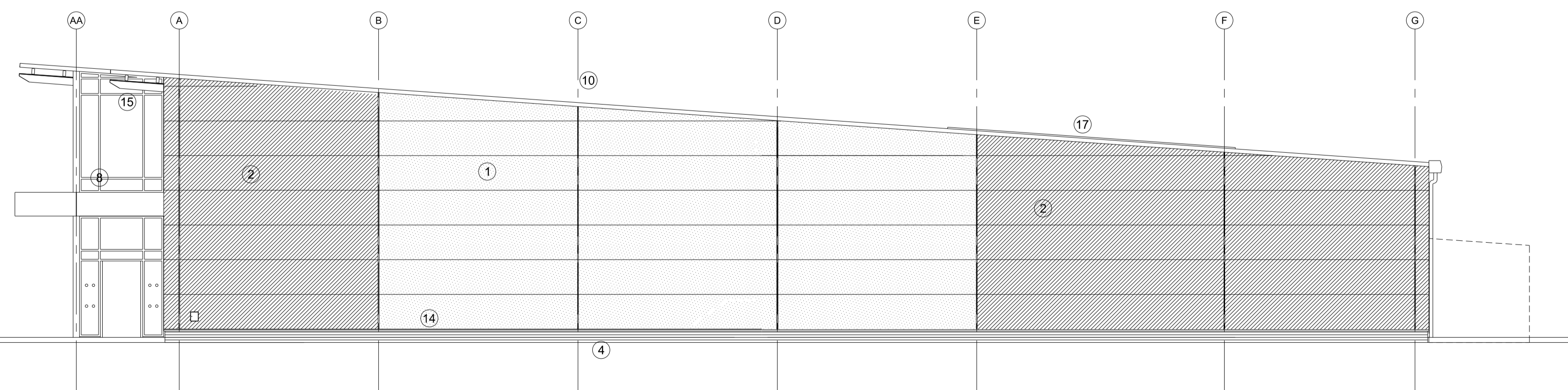
South East Elevation



South West Elevation



North West Elevation



North East Elevation

- EXTERNAL FINISHES - SUBJECT TO PLANNING**
- ① KINGSPAN KS1000WR METALLIC SILVER CLADDING RAL 9005
  - ② KINGSPAN KS1000WR ANTHRACITE GREY CLADDING RAL 7015
  - ③ SHIPFIXENTS - POLYESTER POWDER COATED ALUMINIUM (RAL 7015)
  - ④ BLOCKLAYS BRICK LTD. CHARCOAL BRICKWORK WITH TARMAC Y4 (BLACK) COLOURED MORTAR
  - ⑤ ENTRANCE - POLYESTER POWDER COATED ALUMINIUM (RAL 7015 ANTHRACITE)
  - ⑥ STEEL ESCAPE DOORS - POLYESTER POWDER COATED COLOUR GREY (RAL 7015) (FRAME COLOUR RAL 7015)
  - ⑦ WINDOWS - POLYESTER POWDER COATED ALUMINIUM (RAL 7015)
  - ⑧ CANOPY - POWDER COATED ALUMINIUM TO BS6496 RAL 7015
  - ⑨ RUBBERFEET GOODS POLYESTER POWDER COATED ALUMINIUM (RAL 7015)
  - ⑩ KINGSPAN KS 1000 RW 80MM THICK TRAPEZOIDAL CONCRETE ROOF PANELS ON TUBULAR ALL TO ADHESIVE MIN GAUZE OF 50WSPK. COLOUR TO BE ANTHRACITE GREY RAL 7015.
  - ⑪ SECTIONAL OVERHEAD DOOR - PVP COATED STEEL (RAL 7015)
  - ⑫ TROLLEY BAY RAILS - SATIN FINISH STAINLESS STEEL
  - ⑬ HANDRAILS - GALVANISED TUBULAR STEEL
  - ⑭ PVP COATED ALUMINIUM PRESSED DRIP FLASHING COLOUR METAL (RAL 9005)
  - ⑮ ALL EXPOSED STEELWORK TO BE PAINTED STEEL GUARD 247 FRESH COAT TO BE GLOSS FINISH RAL 7015 ANTHRACITE GREY.
  - ⑯ 200 X 400 ALPHA40N ANODISING NATURAL SUBSIDISED CLADDING BY JAMES & TAYLOR LTD
  - ⑰ SOLAR PV'S BY ANITEC
- NOTES**  
Please refer to Structural Engineers drawings for details of steel frame.

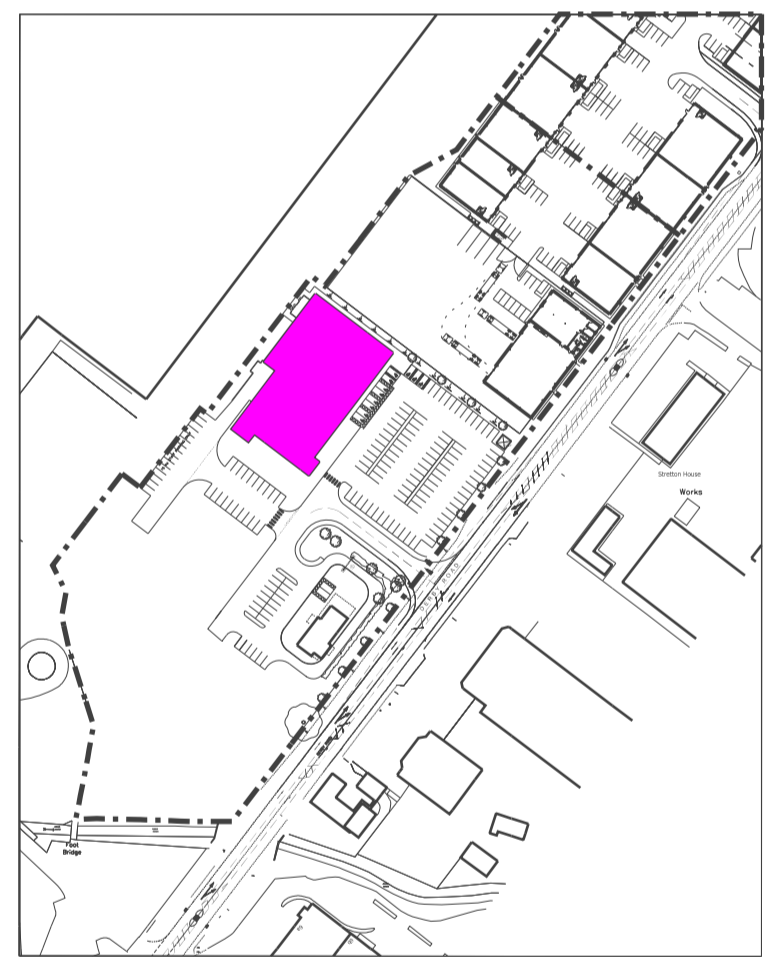
This drawing to be read in conjunction with all specifications and all other consultants design information. Any contradictions between this drawing and any other design information to be advised to the contract administrator and author immediately.

The contractor to site measure, check and verify all information issued, and confirm the correctness of the contents prior to the commencement on site.

The contractor to comply with all current statutory legislation, Building Regulations, British Standards, and good building practice.

Do not scale from this drawing.

Revision	Date	Init
rev	date	dr by / ap by



Key Plan

client: St Modwen Developments Ltd		
project: Albion Gateway -Phase 3 Burton Upon Trent		
title: Foodstore Elevations		
date: 12-04-16	scale: 1:100@A1	status: planning
drawn by: kd	dwg ref: 16001 - A1006	rev:
checked by: fw		

© The drawing, design and the building works depicted are the copyright of Glancy Nicholls Architects Ltd & may not be reproduced or amended, except by the written permission by Glancy Nicholls Architects Ltd. No liability will be accepted for any amendments made by other persons. The issue of this drawing does not confer any license for use of the design to any party whatsoever save as expressly agreed by Glancy Nicholls Architects Ltd.